

# Agarose Gel Electrophoresis System



## Description

GES is the submarine cell comprises with gel tank, gel tray, top lid, casting module and red/black L type electrode. This unit is built by injection mode technology, its unique Dams-claw\* guarantees no leakage while gel casting, different size trays and combs load different volume nucleic acid samples. Quick assembling L type electrode is easily to be cleaned and replaced with its platinum wire.

## Features

- Unique anti-leakage design for gel casting system
- Fluorescence ruler printed on the sample tray
- UV transparent sample tray

## Applications

- Education, university, academic and research institute
- Clinical and diagnostic sample screening
- Analytical chemistry, molecular laboratory
- Food industrial and inspection laboratory
- Drug discovery, Biotechnology company
- Proteomics, genomics core facility



Fluorescence ruler



Demountable Electrode



Dams-Claw

## SPECIFICATION

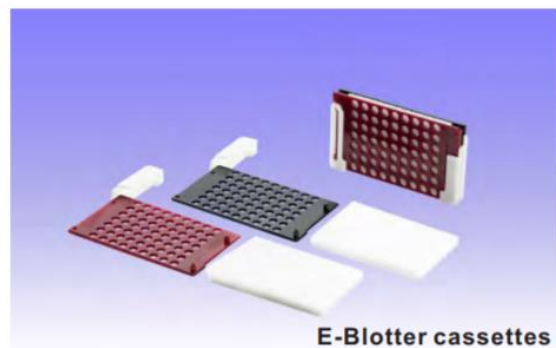
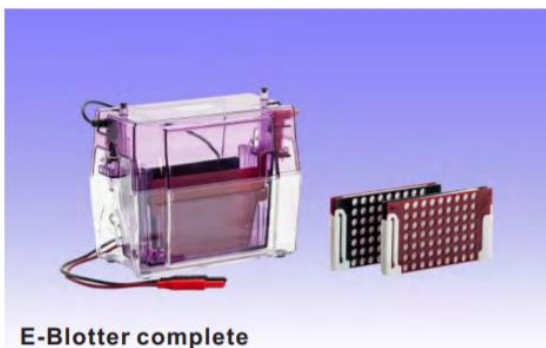
<b>Model</b>	<b>GES-300P</b>
<b>Fluorescence ruler</b>	Yes
<b>Tray size (mm)</b>	70×150 / 100×150 / 150×150
<b>Electrode</b>	Gold-plated electrode with platinum wire
<b>Leakage free gel casting</b>	Dams-claw*
<b>Number of teeth</b>	15, 20
<b>Thickness of comb (mm)</b>	1.0
<b>Sample throughput (ml)</b>	Maximum 40
<b>Buffer volume (ml)</b>	650 - 1,000
<b>Cable</b>	Safety black & red cable
<b>Physical dimensions (mm)</b>	270×175×100 (W×D×H)
<b>Weight (Kg)</b>	2
<b>Certificate</b>	CE

# Vertical Electrophoresis



## Description

Vertical electrophoresis comprises with tank, electrode module, casting module, and optional blotting module. This unit was built by injection mode technology. Its unique anti-leak rubber and clasp-release design\* guarantee leakage free while gel casting. Selectable 0.5, 0.75, 1.0mm thickness spacers and combs load different volume protein samples. Electrode module can run two gels simultaneously, and the blotting module shares the same gel tank. E-Blotter is a high resolution gel transfer apparatus which includes one electrophoresis tank, one cassette holder and two sandwich blotting cassettes and one set of electrode. It can be transfer two gel simultaneously and apply to protein SDS-PAGE and agarose gel. Gpower 300 Plus is recommended power supply for the combination as a perfect blotting system.

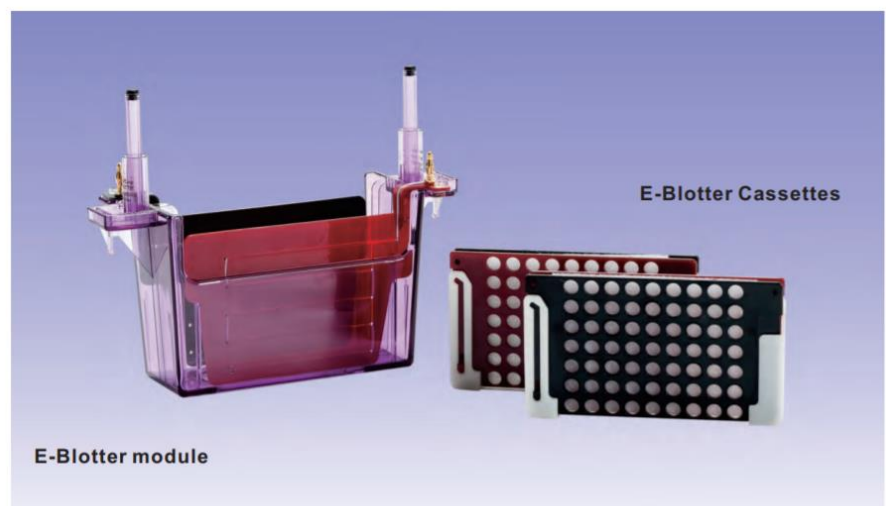
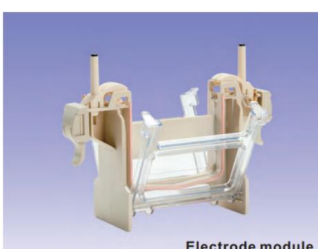


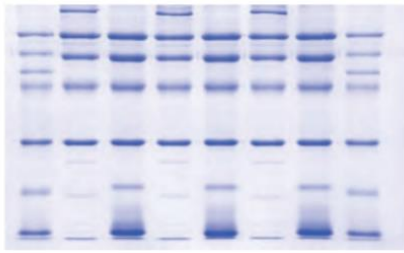
## Features

- Interchangeable module for electrophoresis and blotting
- Sufficient buffer capacity without extra cooling device
- Sandwich cassette assembly clamps for blotting
- Capable of transfer two gels simultaneously
- Anti-leakage clasp-release\* design gel casting module
- Applicable for protein and DNA gel electrophoresis
- Easy handling and no maintenance design

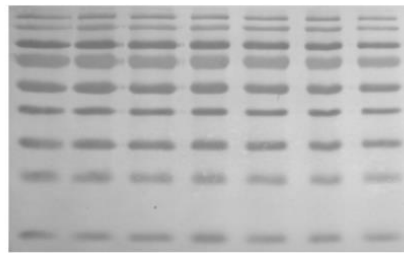
## Applications

- Education, academic and research institute
- Analytical chemistry, molecular laboratory
- Food industrial and inspection laboratory
- Drug discovery, Biotechnology company
- Proteomics, genomics core facility
- Enzyme reaction, immunology

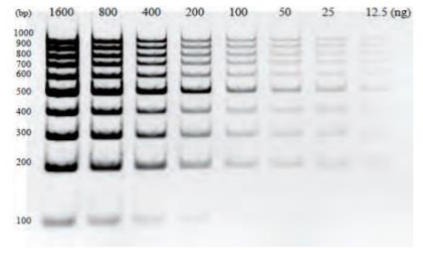




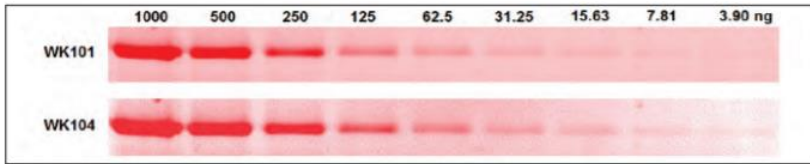
ProMarker separated by V-GES stained with Coomassie Brilliant Blue



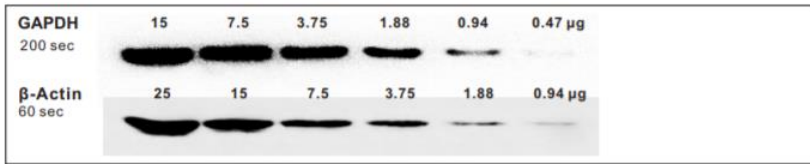
Prestained marker transferred from SDS-PAGE to PVDF by E-Blotter



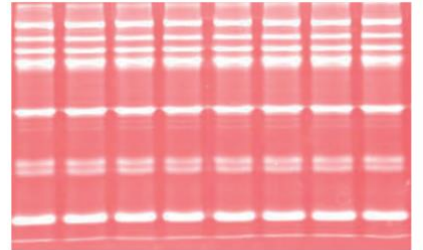
1 kb DNA ladder in acrylamide gel separated by V-GES



Transferrin in SDS-PAGE separated by V-GES stained with SYPRO Red



Total lysate protein transfer from SDS-PAGE to PVDF by E-Blotter Presented by ECL reagent



ProMarker in SDS-PAGE separated by V-GES stained with SYPRO Ruby

## SPECIFICATION

Model	V-GES-300P	E-Blotter-300P
Gel size (mm)	100×80 (W×H)	110×75 (W×H)
Gel Thickness (mm)	0.5 / 0.75 / 1.0	-
Sponge size (mm)	-	110×75 (W×H)
Applicable number of sample	10 - 30	-
Number of gel	1 or 2 gels	-
Transfer capability	-	1 or 2 gels
Blotter module	-	2 cassettes simultaneous
Buffer requirement (ml)	-	1,450
Upper buffer volume (ml)	250 – 300	-
Lower buffer volume (ml)	500 – 1,400	-
Cassette dimensions (mm)	-	140×11×77 (W×D×H)
Distance cathode to anode	-	5
Electrode module w/platinum wire	For 1 or 2 gels operation*	-
Casting module	2 set for gel casting*	-
Glass plate	5 sets	-
Selectable comb teeth	10/15 teeth	-
Comb thickness (mm)	0.5 / 0.75 / 1.0	-
Physical dimensions (mm)	200×130×165 (W×D×H)	200×130×165 (W×D×H)
Weight (Kg)	3	1
Certification	CE	CE

# GPower 300 Plus Power Supply



## Description

The GPower 300 plus, provides the maximum voltage output of 300V and current output 500mA, with 4 sets of output terminals mainly for routine electrophoresis with nucleic acid and SDS-PAGE. With high accuracy and stable output applicable for wet transfer. Easy control Constant V/A with automatic crossover, adjustable voltage and current in minimum 1 V and 1 mA increment provide flexible condition and parameter settings. Three digits seven segments LED readout voltage, current and time. Error messages includes no load detection, sudden load change, over voltage protection, automatic recovery after power failure, short circuit, and current differential alarm for easy troubleshooting. IQ / PQ / OQ protocol is available.

## FEATURES

- No load detection, sudden load change, over voltage protection, automatic recovery after power failure, short circuit, current differential alarm
- Three digit seven segment LED read out voltage, current and time
- Small footprint, stackable, outshell use fire resistance material
- Trustable and accurate power source in the market
- Complete error messages for trouble shooting
- Membrane key pad for functional setting
- Up to four sets output

## SPECIFICATION

<b>Voltage automatic</b>	Yes
<b>Current automatic</b>	Yes
<b>Output Terminals</b>	4 sets
<b>Current adjust steps</b>	4-500mA in 1 mA
<b>Voltage in 1 volt steps</b>	10-300 V
<b>Output power</b>	90 W max.
<b>Operating Temperature</b>	0-40°C
<b>Timer</b>	0-999 mins
<b>Display</b>	3 digit 7 seg LED
<b>Touch Pad</b>	Yes
<b>Alarm</b>	Yes
<b>Input Power</b>	120V / 230V , 50/60 Hz
<b>Physical dimensions (mm)</b>	240 x 320 x 73 (W x D x H)
<b>Weight (kg)</b>	2.0
<b>Certification</b>	CE

## ORDER INFORMATION



Model	Description
GES-300P-A	GES Agarose gel complete system (7×15cm Tray) & GPower 300 plus power supply system
GES-300P-B	GES Agarose gel complete system (7×15cm Tray) & GPower 300 plus power supply system
GES-300P-C	GES Agarose gel complete system (7×15cm Tray) & GPower 300 plus power supply system
V-GES-300P-A	V-GES (0.5mm) complete system & GPower 300 plus power supply system
V-GES-300P-B	V-GES (0.75mm) complete system & GPower 300 plus power supply system
V-GES-300P-C	V-GES (1.0mm) complete system & GPower 300 plus power supply system
VE-GES-300P	E-Blotter complete system (Electrophoresis Tank and E-Blotter module) & GPower 300 plus power supply system