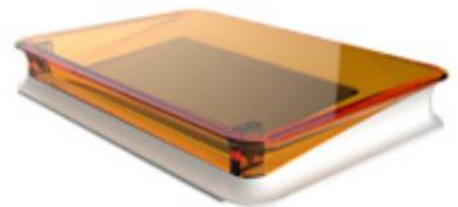


iBLED

Portable to Life Discoveries LED Transilluminator



Concept – Image Originated from the Books

Books are embedded with an abundance of knowledge. The iBLED (DNA transilluminator) contains the DNA messages. Knowledge is acquired by opening the book. While the DNA message is extracted by flipping open iBLED.

The ideal is derived from the book's non-bound, dented side, which offers users the ease with flipping open the upper cover.

The three-dimensional wedge-shaped structure can enhance the upper cover's strength, thus providing a higher level of durability during the course of flipping open the upper cover on a frequent basis.



Features

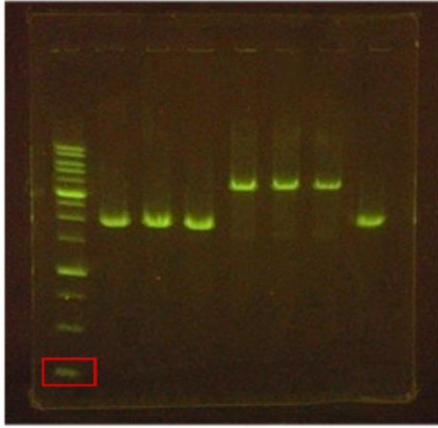
- Smart Power-Saving Function
- Goodbye, power brick
- Blue Light Source Good for 30,000 hours
- No risk of UV damage for high quality work experience
- Light as a Feather, <1.3 KG
- Built-in Gel-Cutting Tool

- Patented 4° Ergonomic Viewing Angle



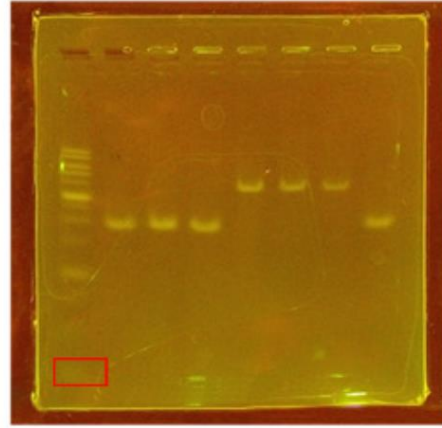
Uniform illumination

Bottom-up illumination to your DNA gel



iBLED

Ultra low background
Bottom-up illumination

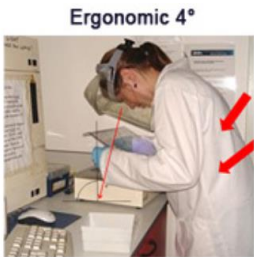


Others

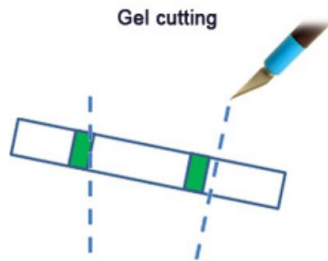
Reflections
Side illumination

Better User Experience

Ergonomic 4° Angle design for easier & accurate gel cutting, No more neck & lower back pain



Ergonomic 4°



Gel cutting

Mini Darkroom

Take a photo



No more uncomfortable UV protection goggles.



Specification

Unit dimension (W×L×H)	295×215×42 mm (11.6×8.4×1.6 in)
Gel viewing dimensions (W×L×H)	200×120 mm (7.8×4.7 in)
Emission maxima (nm)	470nm
Filter type	Amber filter

μBLEED

Portable to Life Discoveries LED transilluminator

Amber filter

The upper panel is the amber filter used to observe the upon being lowered in position.

Tray

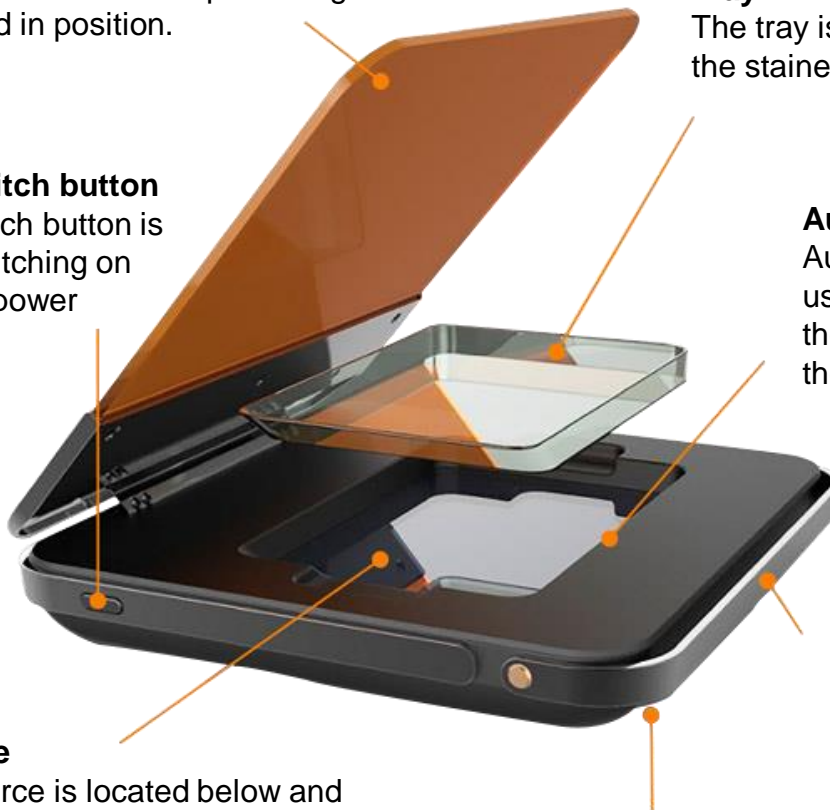
The tray is used to place the stained gel.

Manual switch button

Manual switch button is used for switching on and off the power when press the button.

Auto switch button

Auto switch button is used for turn on/off when the tray is put in or left the light source window.



Light source

The light source is located below and projects upwards from the bottom. Please first lower the amber filter in position when in use for preventing the strong light from harming the eyes.

Rotating bracket

The rotating bracket is used for standing the instruments when switching down.

Power inlet

Power inlet is used for connecting the power cord.

Features

- Optimize for use with the nucleic acid and protein fluorescent dyes.
- Blue light source is good for 30,000 hours.
- No risk of UV damage for high quality work experience.
- The rotating bracket is used for standing the instruments when switching down, easy to view the gel from the amber filter.

Specification

Unit dimension (W×L×H)	193×196×33 mm
Gel viewing dimensions (W×L×H)	88×119×33 mm
Disk (W×L×H)	86×114×10 mm
Weight (g)	500 g
Input voltage	100-240 V, 50/60 Hz
Output voltage	12V, 1.5A (18W)
LED source	Built-in blue light LED module
LED life (hours)	>30000 hours
Emission maxima (nm)	470nm
Store temperature	25°C
Operating temperature	Ambient to 40°C
Filter type	Amber filter

Contents:

A



B



C



- (A) Power Cord: Used to connect the μBLED port with power socket
- (B) μBLED LED transilluminator
- (C) Tray